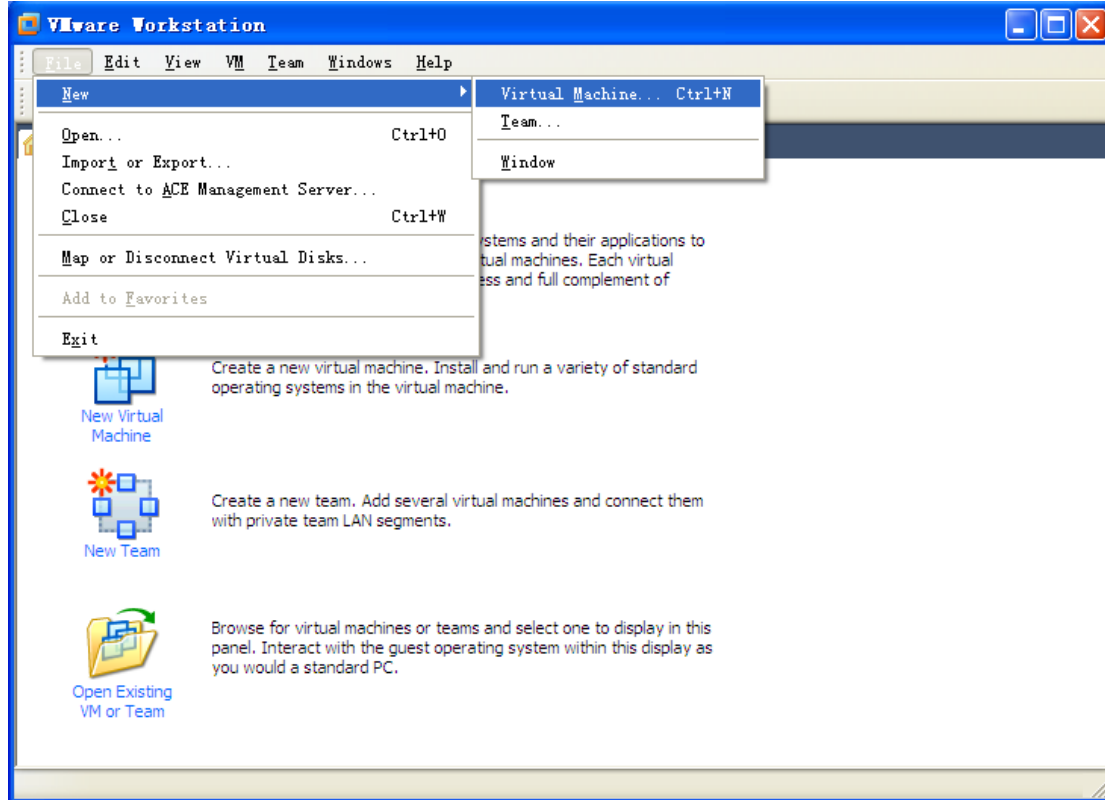
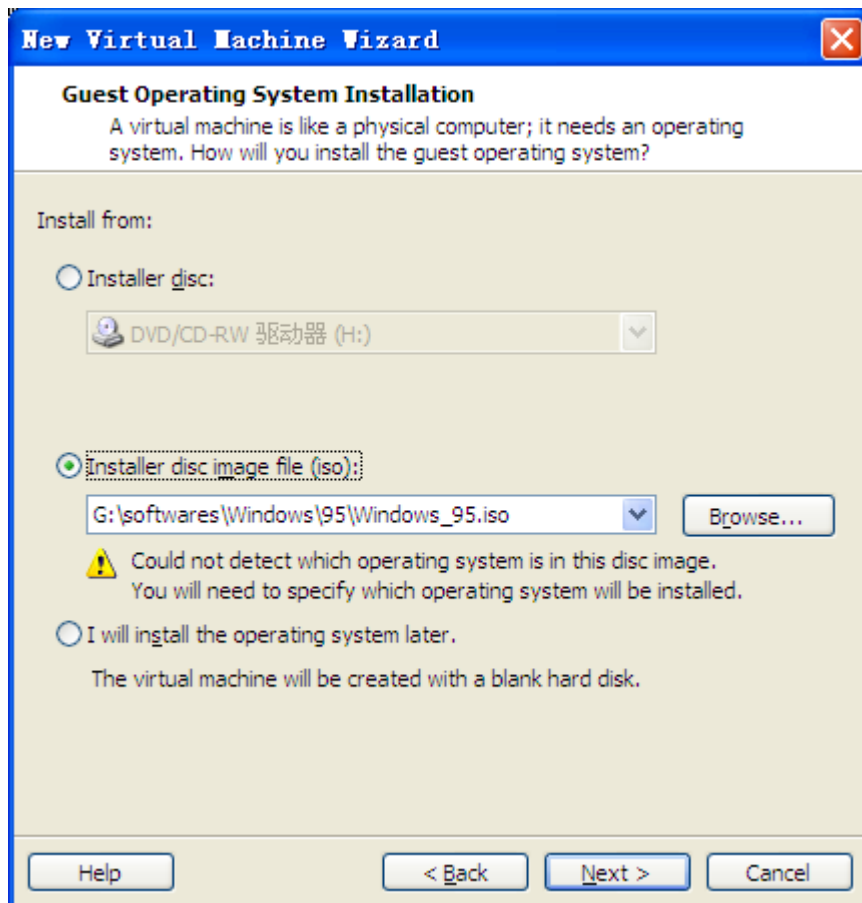


Windows 95 安装方法

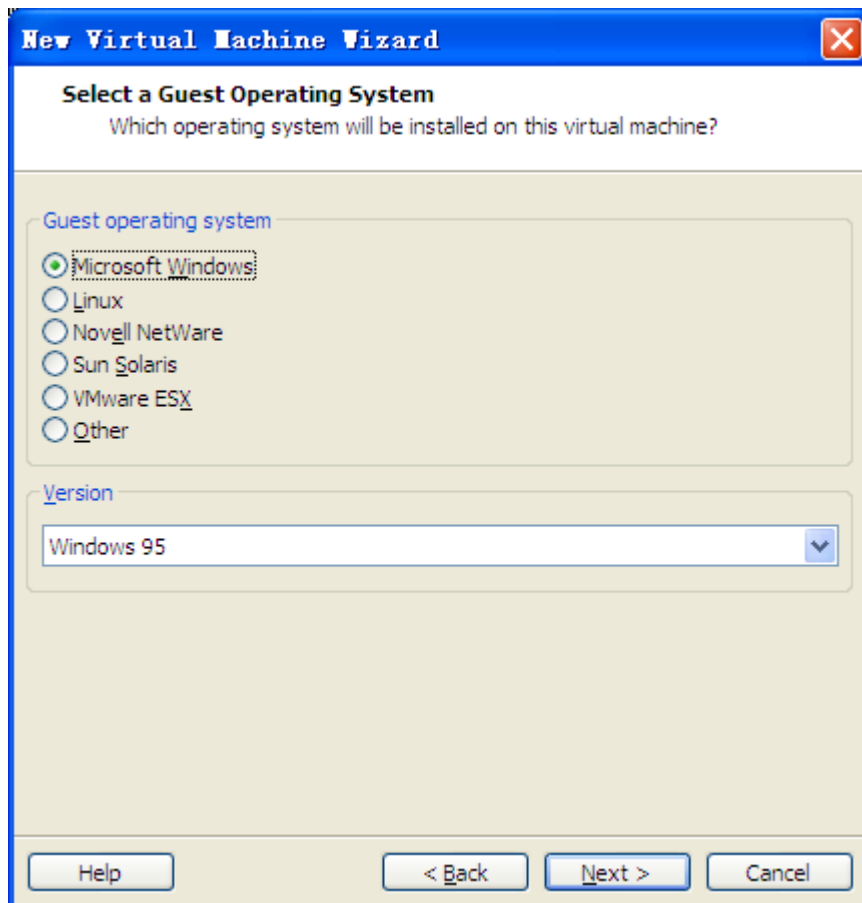
1. 新建虚拟机

打开 VMware Workstation，选择 File - New - Virtual Machine...

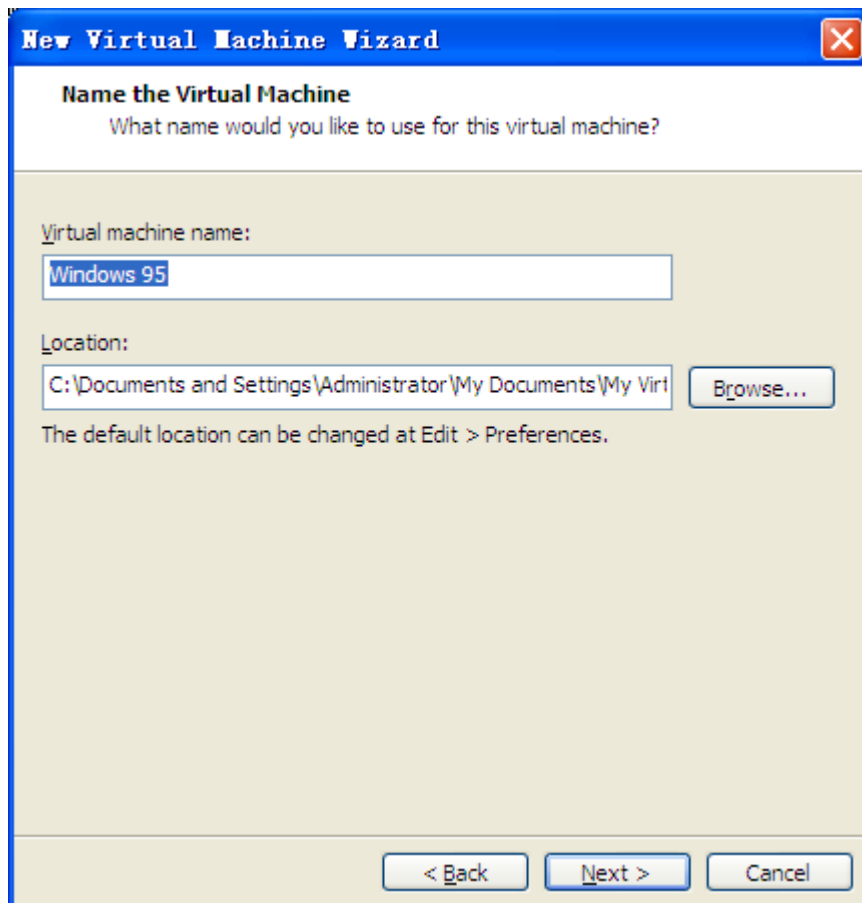




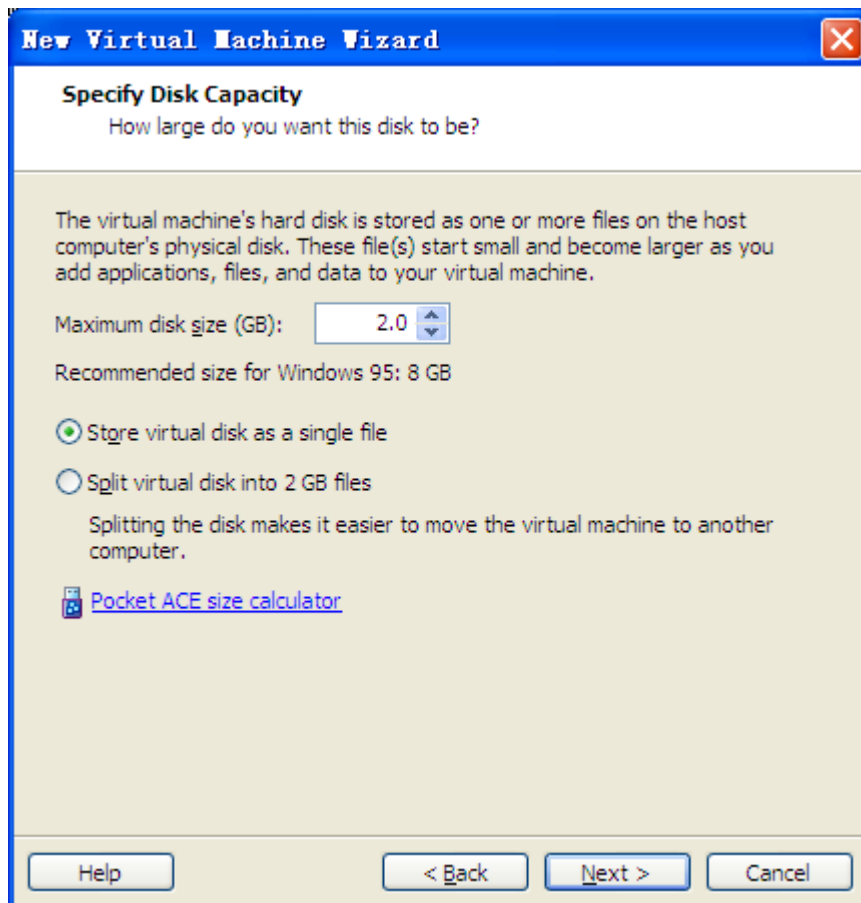
选择 Windows 95 的安装光盘映像文件 Windows_95.iso，



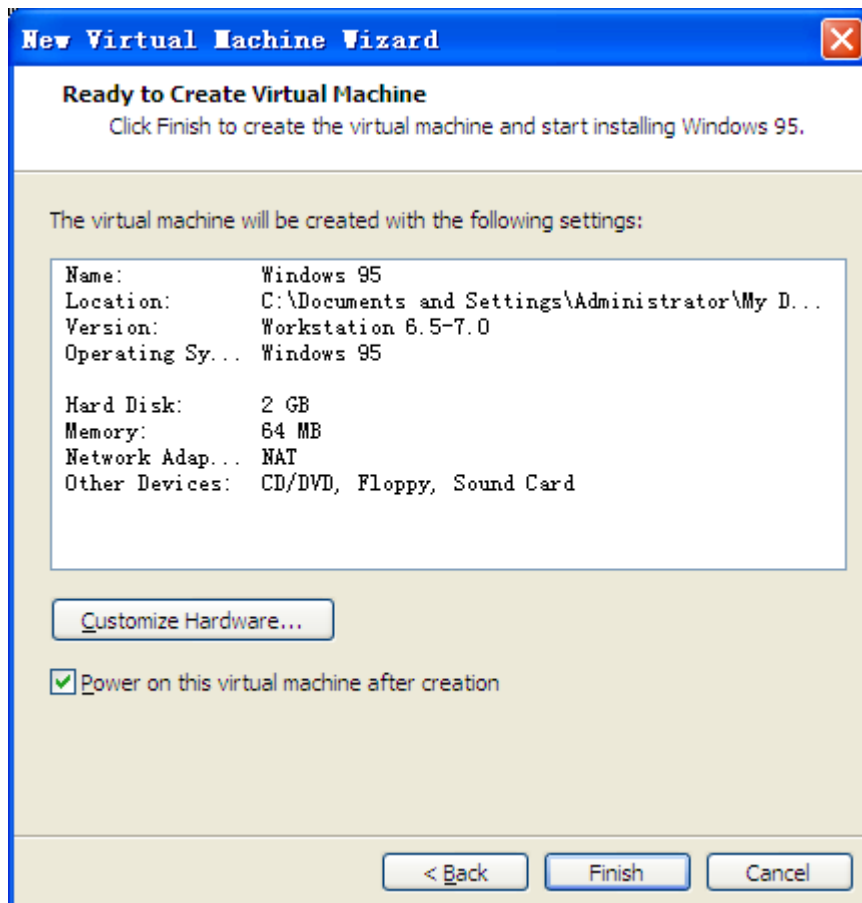
按上图选择，



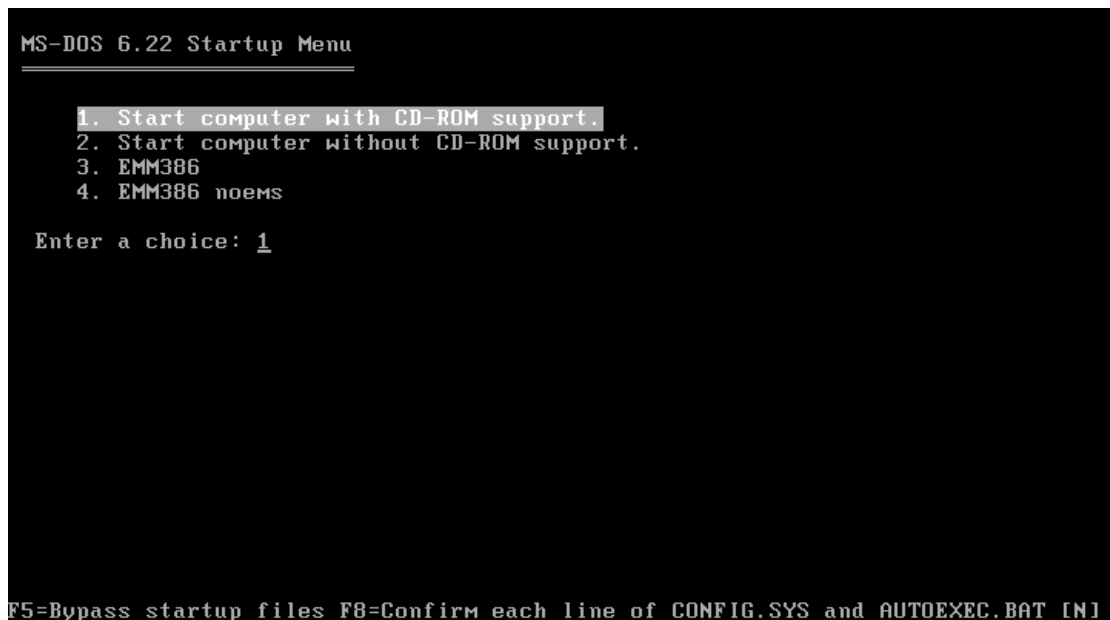
选择保存虚拟系统的位置，至少 2.5G 自由空间，



设置 Windows 95 使用的硬盘空间，最多 2G，



单击“Finish”，启动虚拟机开始安装，



选择 1 ， 加载光驱并启动，

```

1. Start computer with CD-ROM support.
2. Start computer without CD-ROM support.
3. EMM386
4. EMM386 noems

Enter a choice: 1

This driver is provided by Oak Technology, Inc..
DTI-91X ATAPI CD-ROM device driver, Rev D91XU352
(C)Copyright Oak Technology Inc. 1987-1997
Device Name       : MSCD001
Transfer Mode     : Programmed I/O
Number of drives  : 1

Microsoft (R) Mouse Driver Version 8.20
Copyright (C) Microsoft Corp. 1983-1992. All rights reserved.
Mouse driver installed
MSCDEX Version 2.23
Copyright (C) Microsoft Corp. 1986-1993. All rights reserved.
Drive C: = Driver MSCD001 unit 0
A:\>_

```

```

1. Start computer with CD-ROM support.
2. Start computer without CD-ROM support.
3. EMM386
4. EMM386 noems

Enter a choice: 1

This driver is provided by Oak Technology, Inc..
DTI-91X ATAPI CD-ROM device driver, Rev D91XU352
(C)Copyright Oak Technology Inc. 1987-1997
Device Name       : MSCD001
Transfer Mode     : Programmed I/O
Number of drives  : 1

Microsoft (R) Mouse Driver Version 8.20
Copyright (C) Microsoft Corp. 1983-1992. All rights reserved.
Mouse driver installed
MSCDEX Version 2.23
Copyright (C) Microsoft Corp. 1986-1993. All rights reserved.
Drive C: = Driver MSCD001 unit 0
A:\>fdisk_

```

2. 分区

输入 fdisk 按回车开始分区，

```
MS-DOS Version 6
Fixed Disk Setup Program
(C)Copyright Microsoft Corp. 1983 - 1993
```

FDISK Options

Current fixed disk drive: 1

Choose one of the following:

1. Create DOS partition or Logical DOS Drive
2. Set active partition
3. Delete partition or Logical DOS Drive
4. Display partition information

Enter choice: 1

Press Esc to exit FDISK

按回车,

Create DOS Partition or Logical DOS Drive

Current fixed disk drive: 1

Choose one of the following:

1. Create Primary DOS Partition
2. Create Extended DOS Partition
3. Create Logical DOS Drive(s) in the Extended DOS Partition

Enter choice: 1

Press Esc to return to FDISK Options

按回车,


```

                                Create Primary DOS Partition

Current fixed disk drive: 1

Do you wish to use the maximum available size for a Primary DOS Partition
and make the partition active (Y/N).....? [Y]

Press Esc to return to FDISK Options

```

输入 Y 按回车,

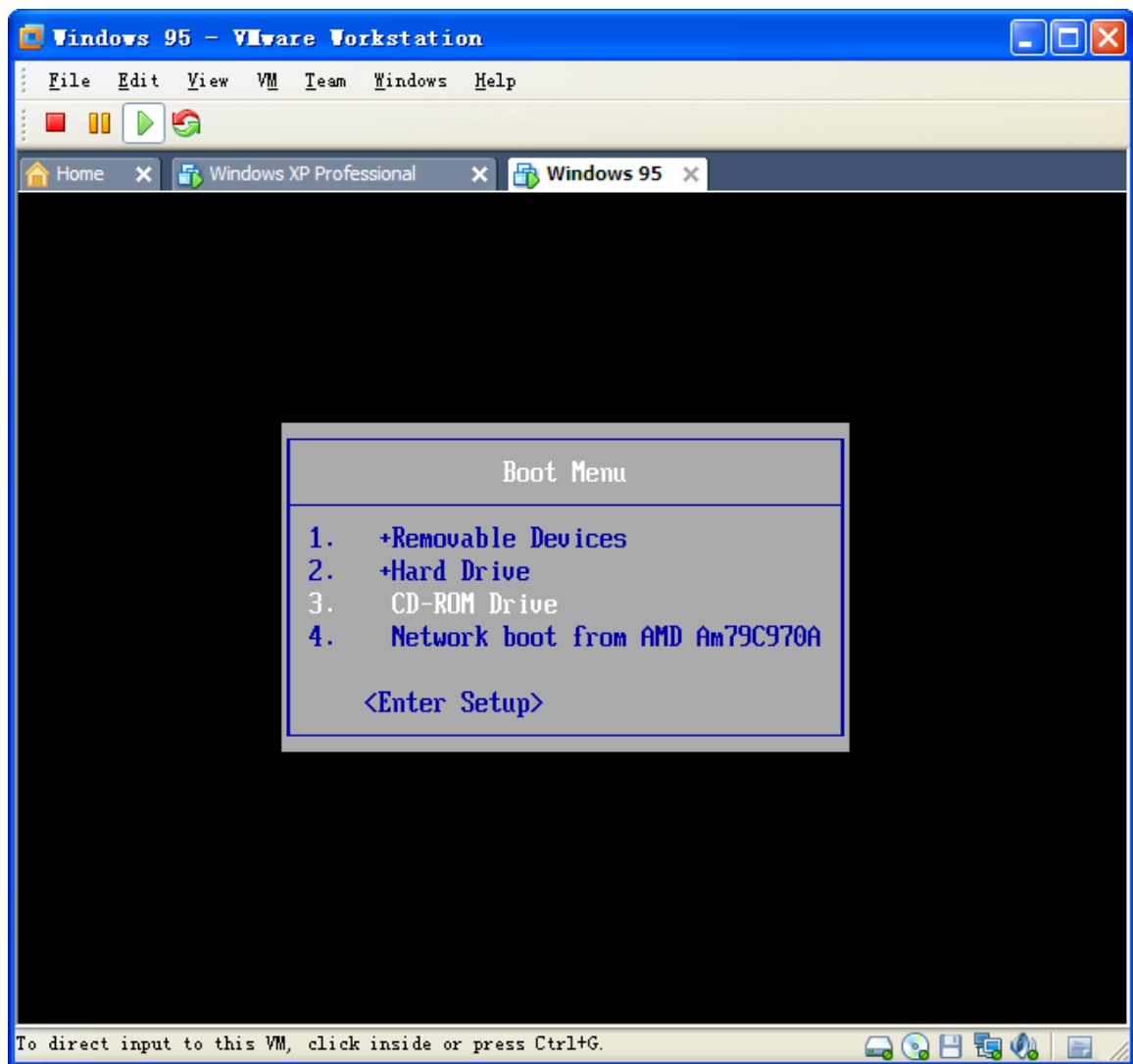
```

System will now restart

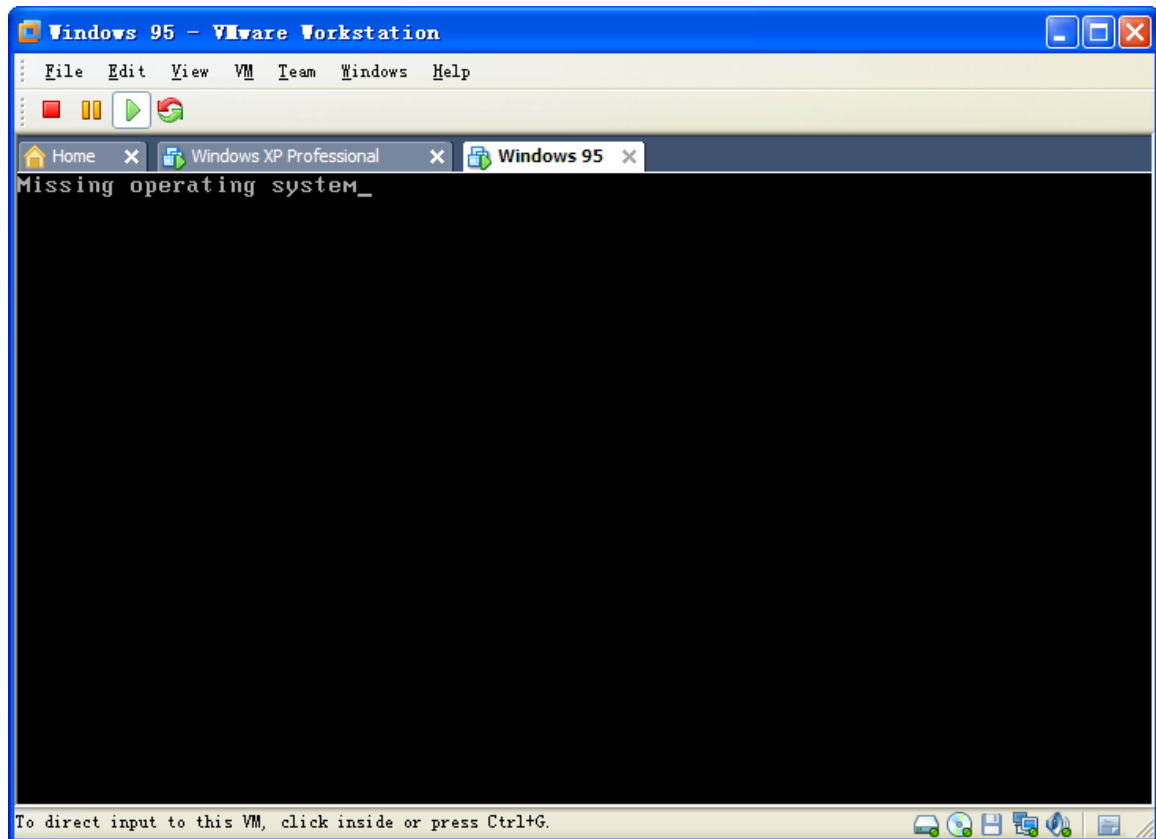
Insert DOS system diskette in drive A:
Press any key when ready . . . _


```

按任意键重新启动虚拟机，启动时当出现 VMware 时要在 VMware 中点一下鼠标，然后马上按 ESC，出现启动菜单，然后按向下方向键选择 CD-ROM，然后按回车，



否则会出现下图不能启动,



如果出现上图可以同时按键盘右边的 Ctrl 和 Alt ，然后按  重新启动按上面的说明操作，

```
1. Start computer with CD-ROM support.
2. Start computer without CD-ROM support.
3. EMM386
4. EMM386 noems

Enter a choice: 1

This driver is provided by Oak Technology, Inc..
DTI-91X ATAPI CD-ROM device driver, Rev D91XU352
(C)Copyright Oak Technology Inc. 1987-1997
Device Name       : MSCD001
Transfer Mode      : Programmed I/O
Number of drives   : 1

Microsoft (R) Mouse Driver Version 8.20
Copyright (C) Microsoft Corp. 1983-1992. All rights reserved.
Mouse driver installed
MSCD001 Version 2.23
Copyright (C) Microsoft Corp. 1986-1993. All rights reserved.
Drive D: = Driver MSCD001 unit 0
A:\>format c:_
```

3. 格式化 C 盘

输入 format c: 按回车格式化虚拟机的 C 盘，

```

3. EMM386
4. EMM386 noems

Enter a choice: 1

This driver is provided by Oak Technology, Inc..
DTI-91X ATAPI CD-ROM device driver, Rev D91XU352
(C)Copyright Oak Technology Inc. 1987-1997
Device Name       : MSCD001
Transfer Mode     : Programmed I/O
Number of drives  : 1

Microsoft (R) Mouse Driver Version 8.20
Copyright (C) Microsoft Corp. 1983-1992. All rights reserved.
Mouse driver installed
MSCDEX Version 2.23
Copyright (C) Microsoft Corp. 1986-1993. All rights reserved.
Drive D: = Driver MSCD001 unit 0
A:\>format c:

WARNING: ALL DATA ON NON-REMOVABLE DISK
DRIVE C: WILL BE LOST!
Proceed with Format (Y/N)?y_

```

输入 y 按回车,

```

This driver is provided by Oak Technology, Inc..
DTI-91X ATAPI CD-ROM device driver, Rev D91XU352
(C)Copyright Oak Technology Inc. 1987-1997
Device Name       : MSCD001
Transfer Mode     : Programmed I/O
Number of drives  : 1

Microsoft (R) Mouse Driver Version 8.20
Copyright (C) Microsoft Corp. 1983-1992. All rights reserved.
Mouse driver installed
MSCDEX Version 2.23
Copyright (C) Microsoft Corp. 1986-1993. All rights reserved.
Drive D: = Driver MSCD001 unit 0
A:\>format c:

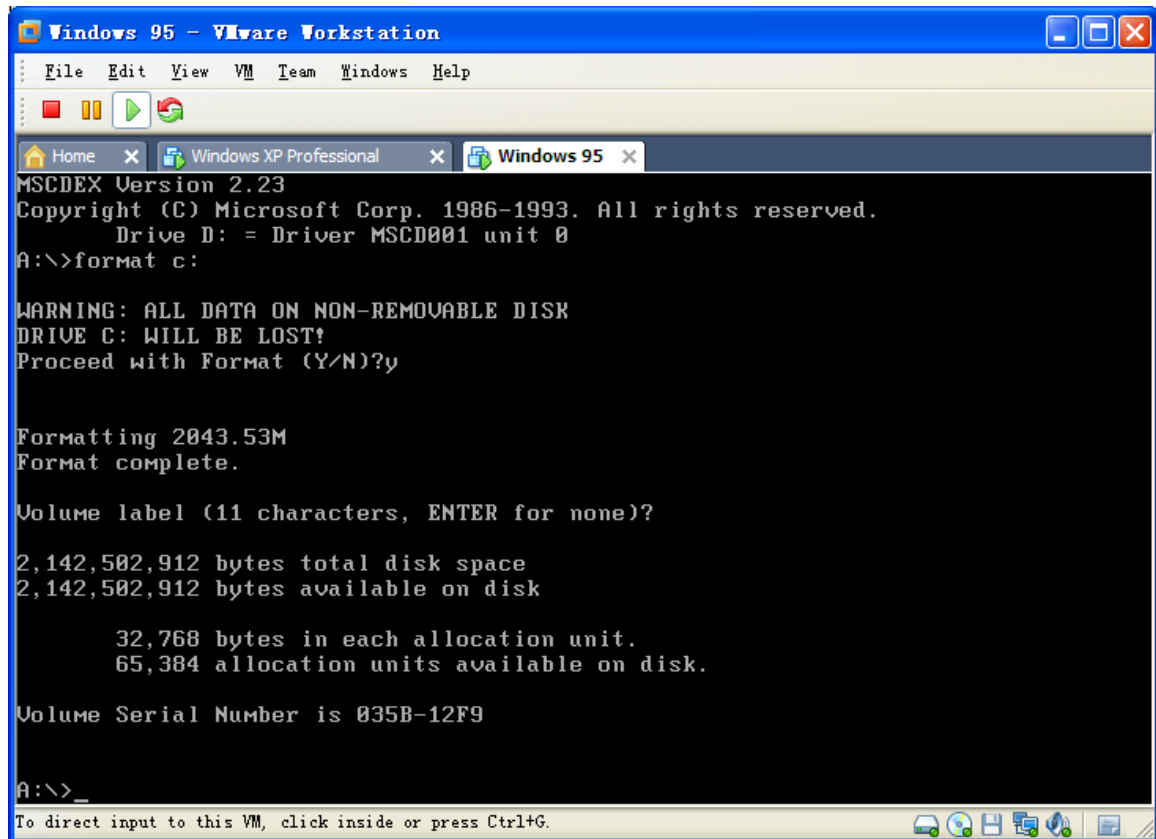
WARNING: ALL DATA ON NON-REMOVABLE DISK
DRIVE C: WILL BE LOST!
Proceed with Format (Y/N)?y

Formatting 2043.53M
Format complete.

Volume label (11 characters, ENTER for none)? _

```

按回车,



4. 复制安装文件到 C 盘,

```
Drive D: = Driver MSCD001 unit 0
A:\>format c:

WARNING: ALL DATA ON NON-REMOVABLE DISK
DRIVE C: WILL BE LOST!
Proceed with Format (Y/N)?y

Formatting 2043.53M
Format complete.

Volume label (11 characters, ENTER for none)?

2,142,502,912 bytes total disk space
2,142,502,912 bytes available on disk

32,768 bytes in each allocation unit.
65,384 allocation units available on disk.

Volume Serial Number is 0E2A-13F4

A:\>d:
D:\>_
```

输入 d: 按回车进入光盘,

```

WARNING: ALL DATA ON NON-REMOVABLE DISK
DRIVE C: WILL BE LOST!
Proceed with Format (Y/N)?y

Formatting 2043.53M
Format complete.

Volume label (11 characters, ENTER for none)?

2,142,502,912 bytes total disk space
2,142,502,912 bytes available on disk

    32,768 bytes in each allocation unit.
    65,384 allocation units available on disk.

Volume Serial Number is 2B6B-1911

A:\>d:

D:\>md c:\setup

D:\>copy *.* c:\setup_

```

输入 md c:\setup 按回车在 C 盘新建一个 setup 文件夹，

```

WIN95_23.CAB
WIN95_24.CAB
WIN95_25.CAB
WIN95_26.CAB
WIN95_27.CAB
WIN95_28.CAB
WIN95_29.CAB
WIN95_30.CAB
WIN95_31.CAB
WIN95_32.CAB
WIN95_33.CAB
WIN95_34.CAB
WIN95_35.CAB
WIN95_36.CAB
WIN95_37.CAB
WIN95_38.CAB
WINSETUP.BIN
XMSMMGR.EXE
    63 file(s) copied

D:\>c:

C:\>cd setup

C:\SETUP>setup_

```

5. 开始安装

输入 c: 按回车，再输入 cd setup 按回车，再输入 setup /im /id /is /iq 按回车开始安装，注意 setup 后面有空格，每个 / 前面也有空格，

```

Please wait while Setup initializes.

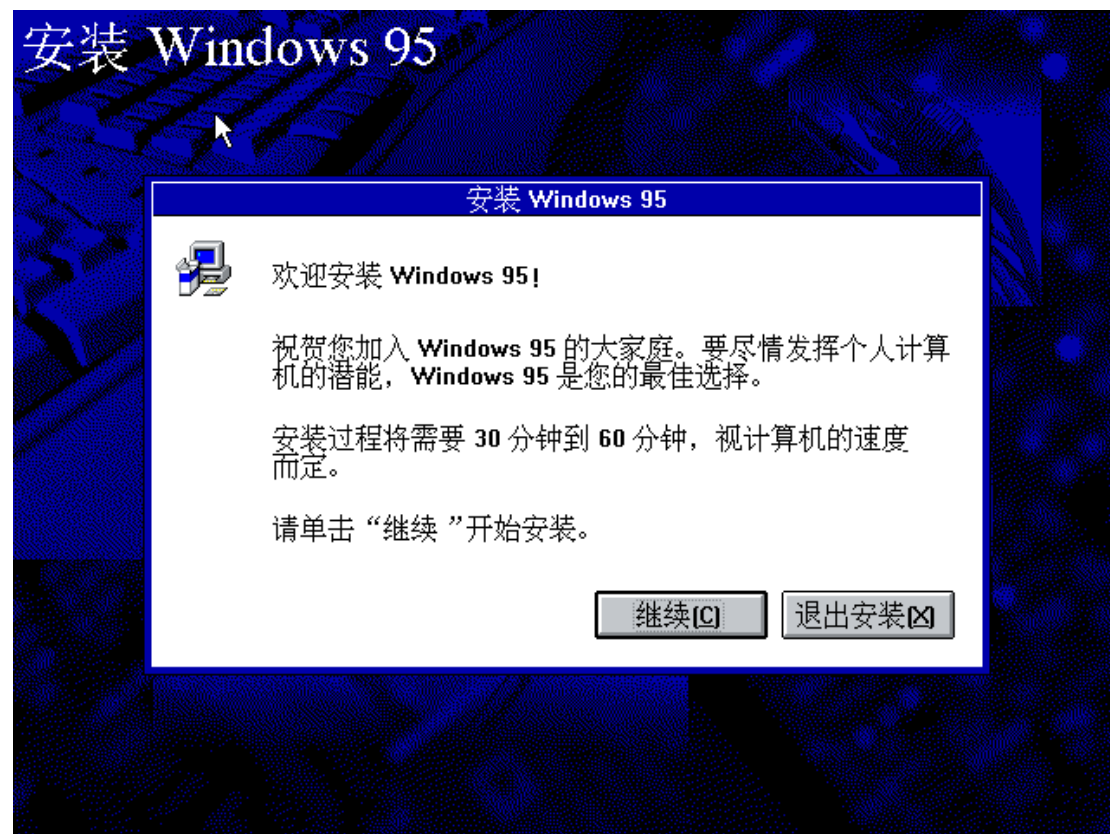
Setup is now going to perform a routine check on your system.

To continue, press ENTER. To quit Setup, press ESC.

D:\>setup /?
Setup Options: SETUP [/C] [/iL] [batch] [/T:tmp] [/im] [/id] [/is] [/iq] [/in]
  /C          Instructs Setup not to load the SmartDrive disk cache.
  /iL         Loads the Logitech mouse driver instead of the Microsoft
              mouse driver. Use this option if you have a Logitech
              Series C mouse.
  [batch]     Specifies the name and location of the file that contains
              Setup options.
  /T:tmp      Specifies the directory where Setup will copy its temporary
              files. If the directory doesn't exist, it will be created.
              WARNING: Any existing files in this directory will be deleted.
  /im         Skips the memory check.
  /id         Skips the disk-space check.
  /is         Doesn't run ScanDisk.
  /iq         Skips the check for cross-linked files.
  /in         Runs Setup without the Network Setup module.
Note: The /a and /n options are no longer valid. Use NETSETUP.EXE instead.

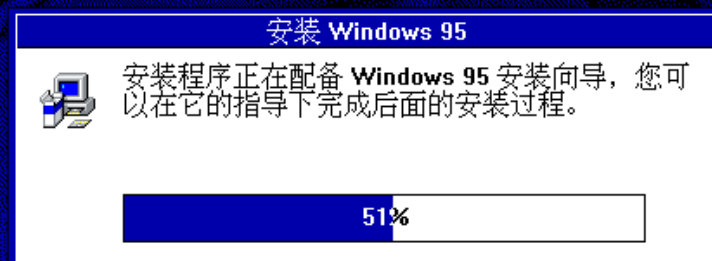
D:\>setup /im /id /is /iq_

```

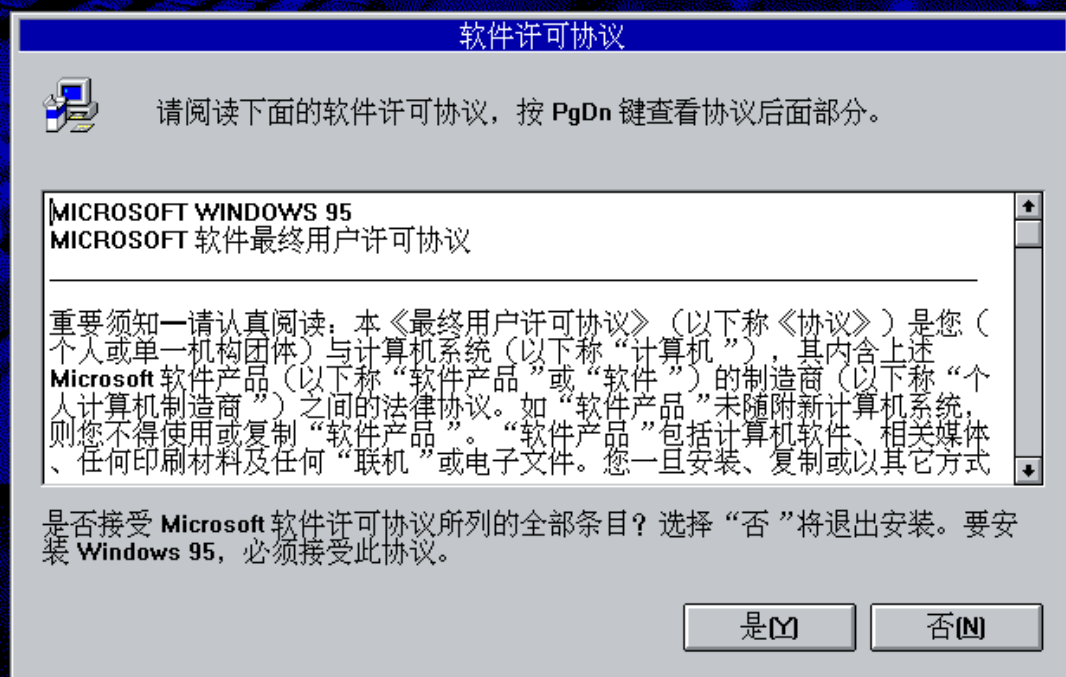


单击“继续”，

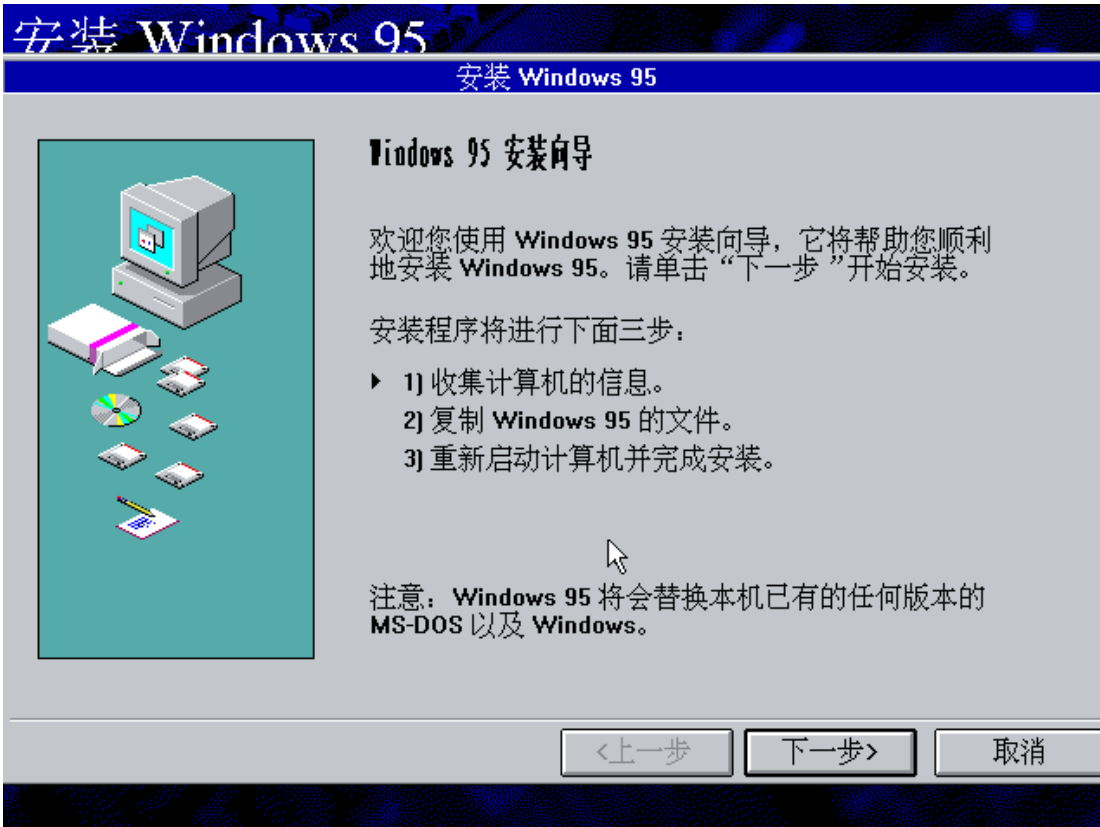
安装 Windows 95



安装 Windows 95



单击“是”，



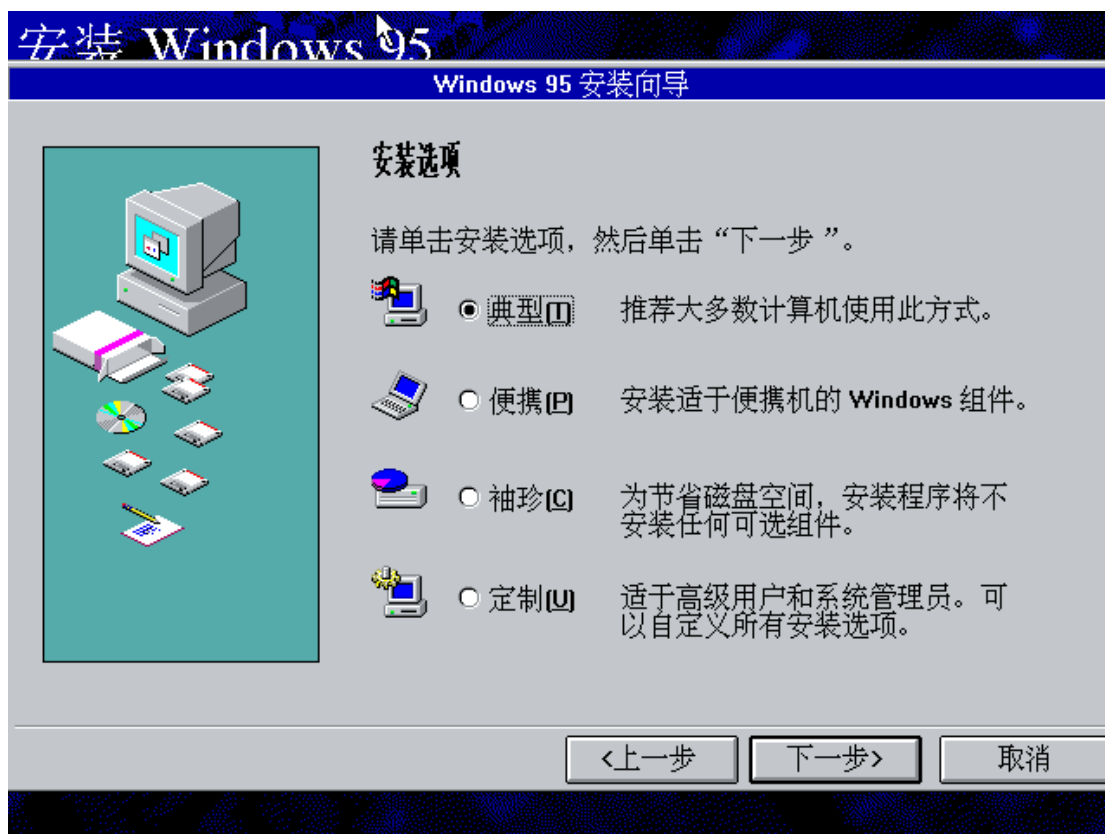
单击“下一步”，



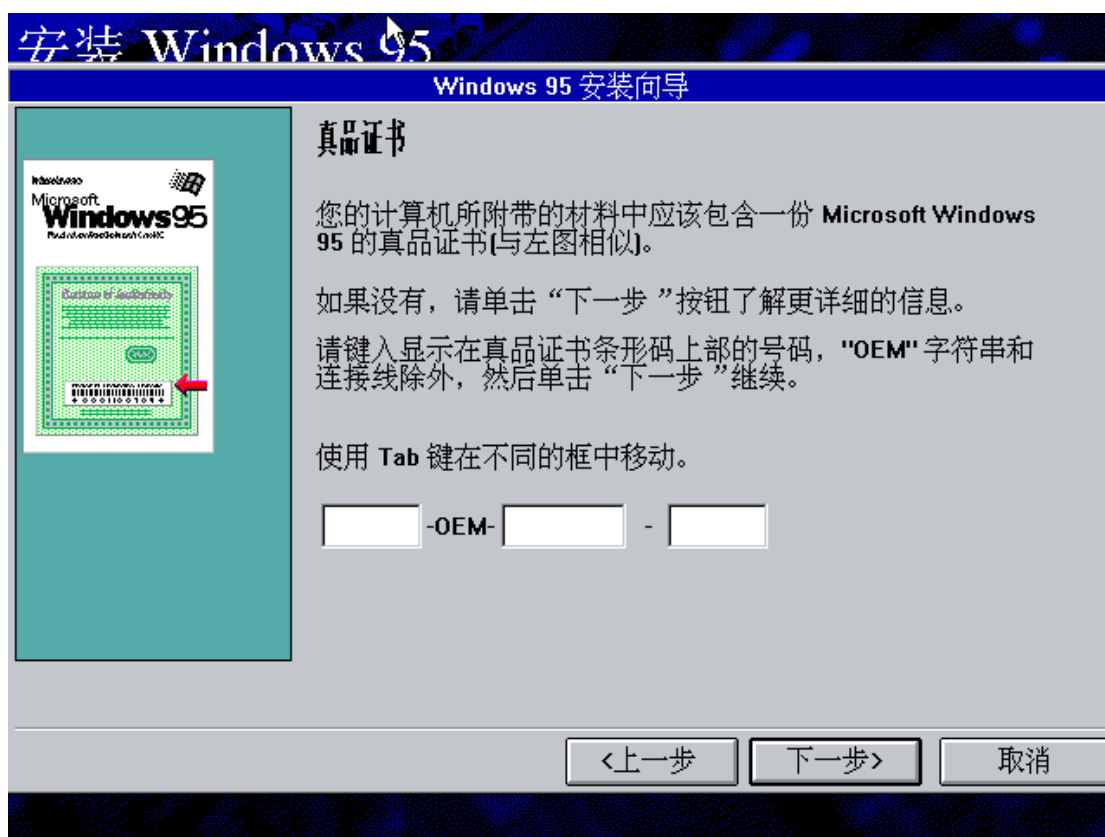
单击“下一步”，



单击“下一步”，



单击“下一步”，



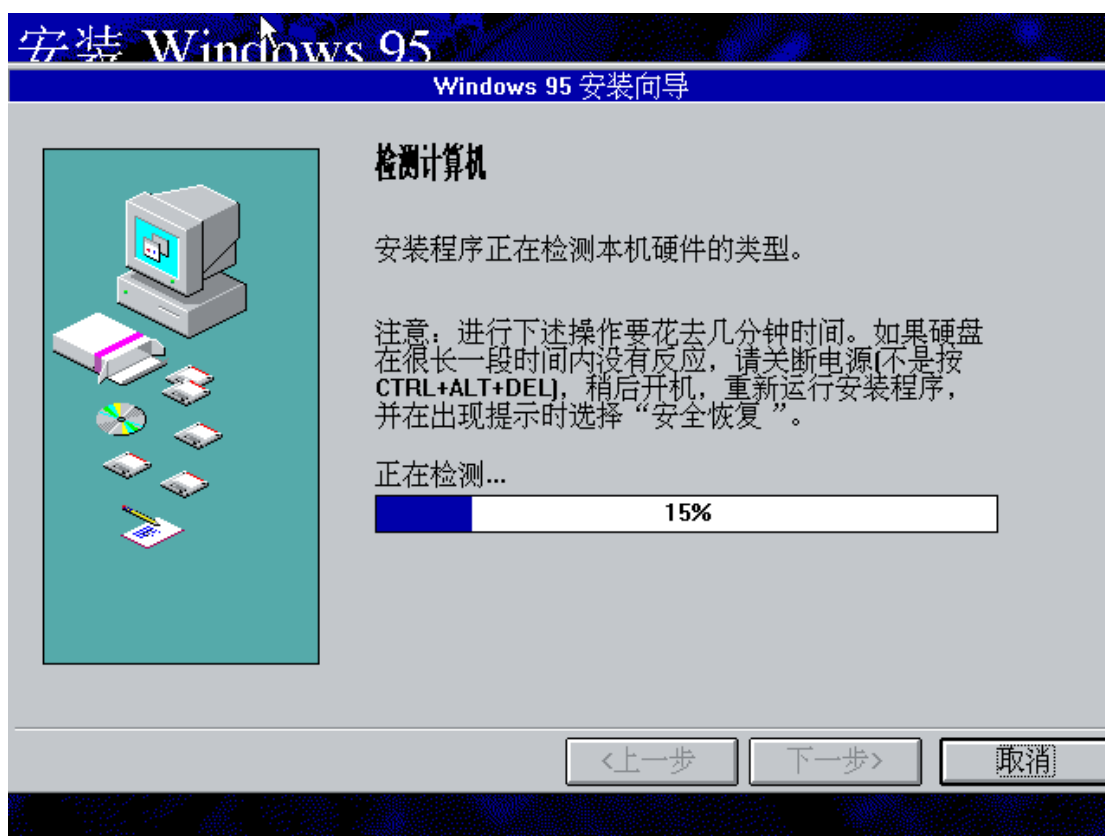
输入序列号 35296-OEM-0017544-62261，



单击“下一步”，

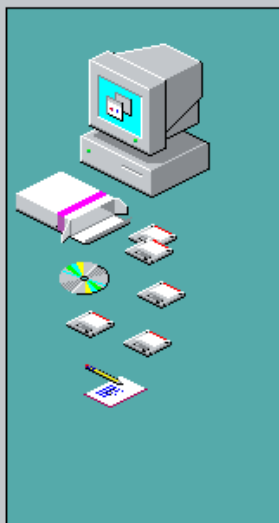


单击“下一步”，



安装 Windows 95

Windows 95 安装向导



Windows 组件

Windows 包含多种可选组件，包括游戏、磁盘工具及其它附件。您可以通过安装程序立即安装，也可以以后通过控制面板安装。

部分选项需要额外的磁盘空间，如果未从列表中选择将不安装。

请单击所需的选项，然后单击“下一步”。

- ☒ 安装最常用的组件(推荐)(M)
- ☐ 显示组件列表(S)

<上一步

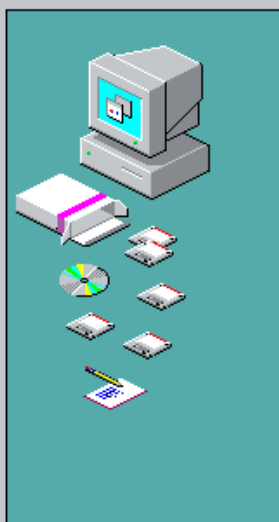
下一步>

取消

单击“下一步”，

安装 Windows 95

Windows 95 安装向导



启动盘

请指明是否创建启动盘。

如果启动 Windows 时遇到问题，可以使用一张盘来启动计算机，并运行诊断程序。请准备一张软盘(至少 1.2 MB)以制作启动盘。

- ☐ 需要启动盘(推荐)(M)
- ☒ 不需要启动盘(N)

<上一步

下一步>

取消

选择“不需要启动盘”，单击“下一步”，



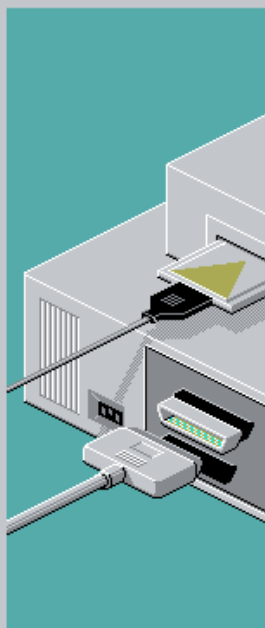
单击“下一步”，



等候安装完成，

安装 Windows 95

即插即用



使用 Windows 95 的即插即用安装设备，简单到只需插入和开机即可。

- Windows 95 会自动设置诸如打印机、CD-ROM、调制解调器、视频卡和声音卡之类的即插即用的兼容设备。
- 您甚至可以在 Windows 95 运行的时候插入和移走某些设备。
- 请查找即插即用设备上的 "Designed for Windows 95" 徽标。

正在复制文件...

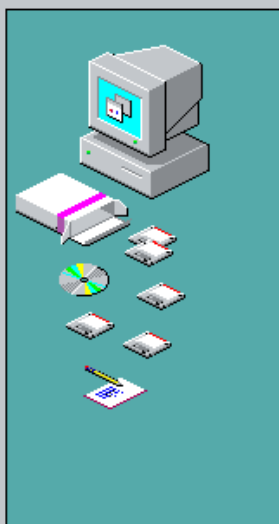
52%

退出(F3) (E)

安装 Windows 95

Windows 95 安装向导

完成安装



安装向导准备启动 Windows 95，开始安装最后部分。

移走软驱中的磁盘，然后单击“完成”来重新启动计算机，并完成安装。

- 1) 收集计算机的信息。
- 2) 复制 Windows 95 的文件。
- ▶ 3) 重新启动计算机并完成安装。

<上一步

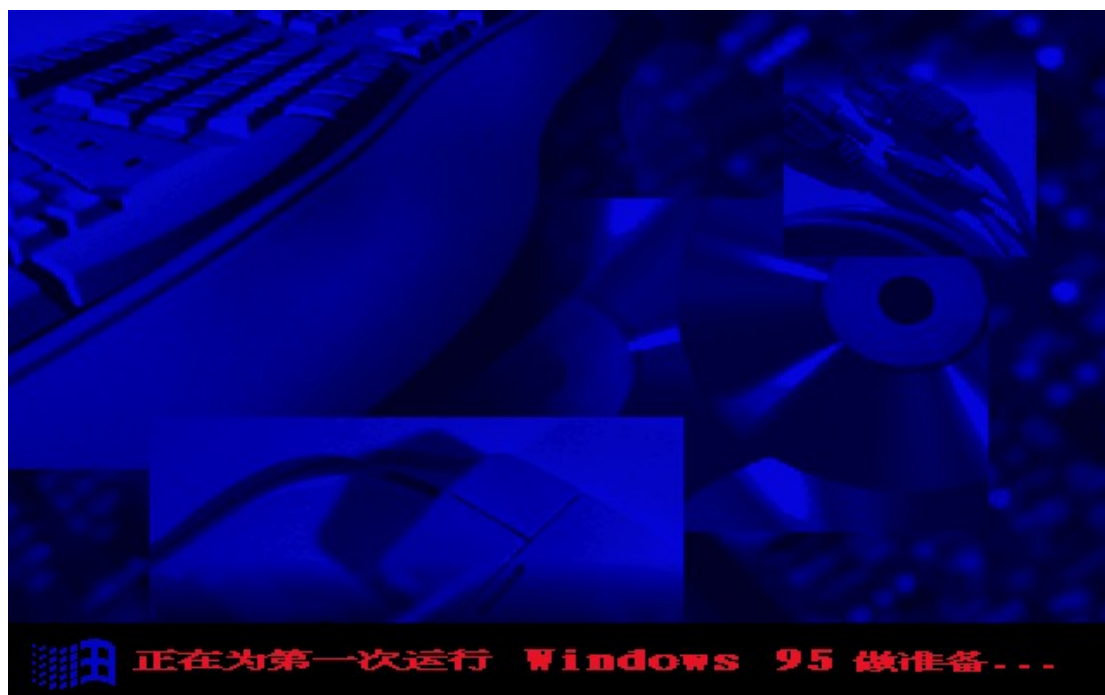
完成

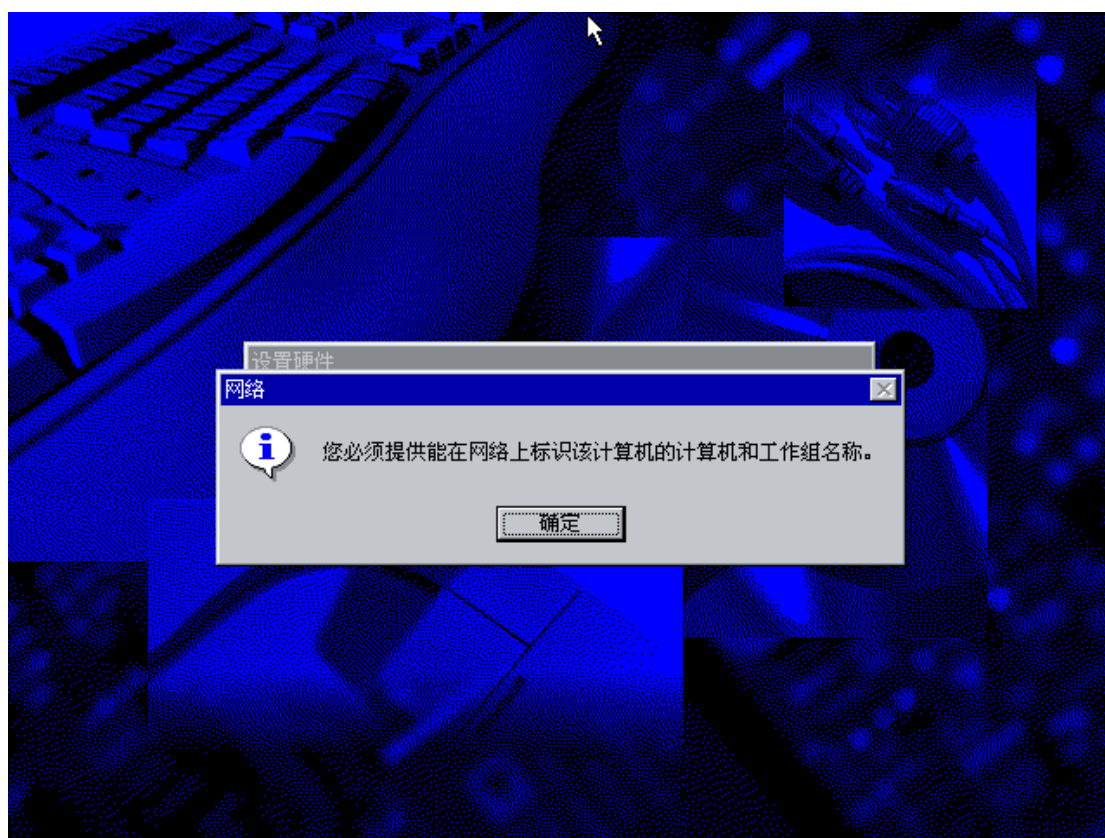
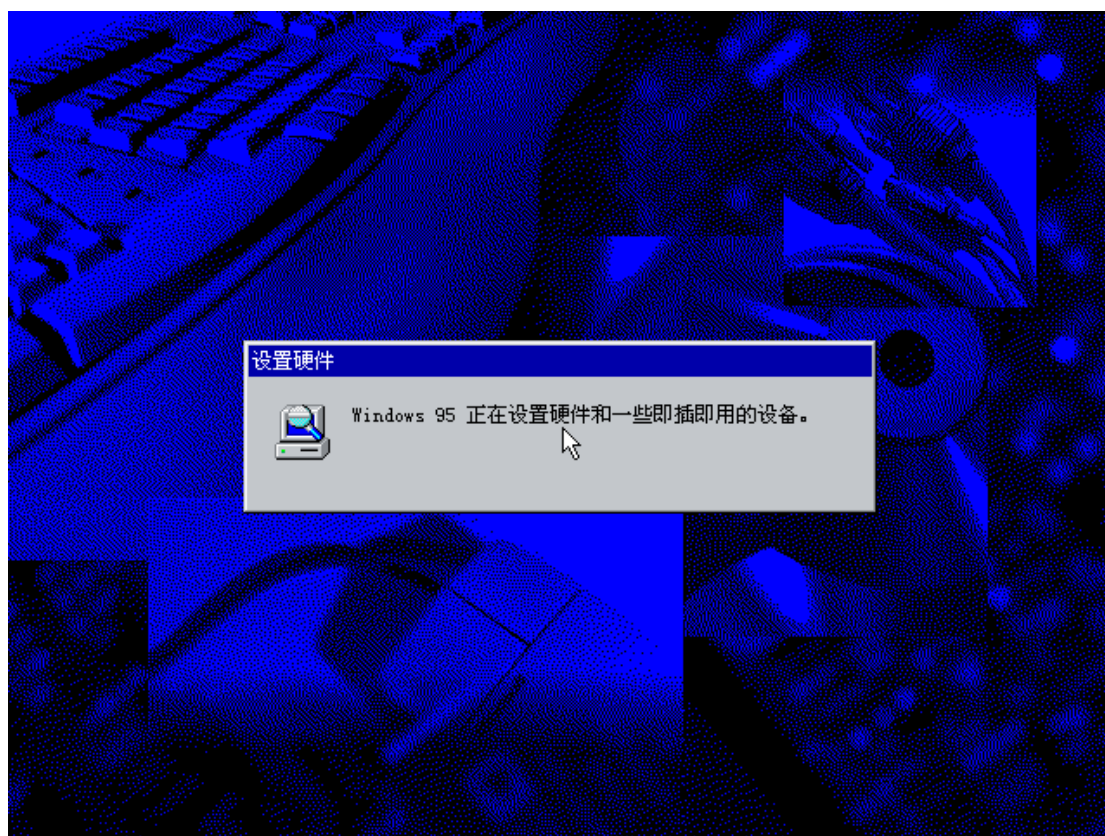


安装程序准备重新启动计算机，结束 Windows 95 的安装。



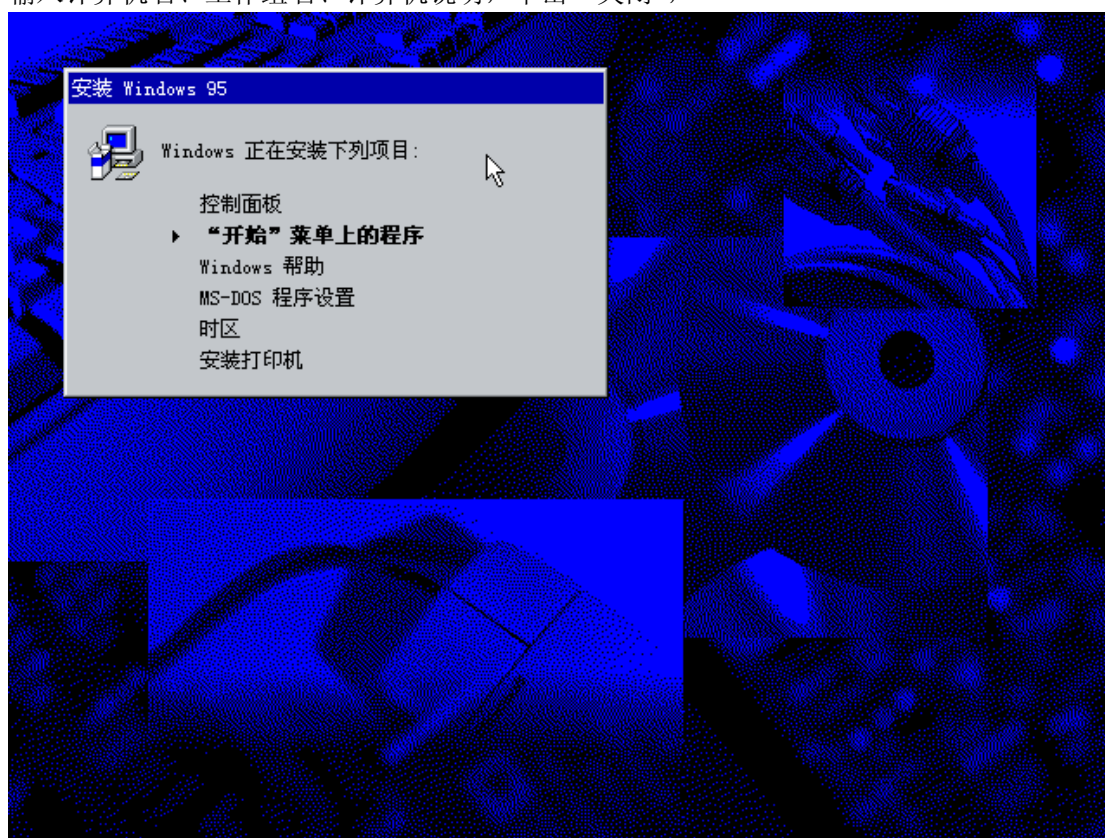
单击“完成”启动计算机,







输入计算机名、工作组名、计算机说明，单击“关闭”，





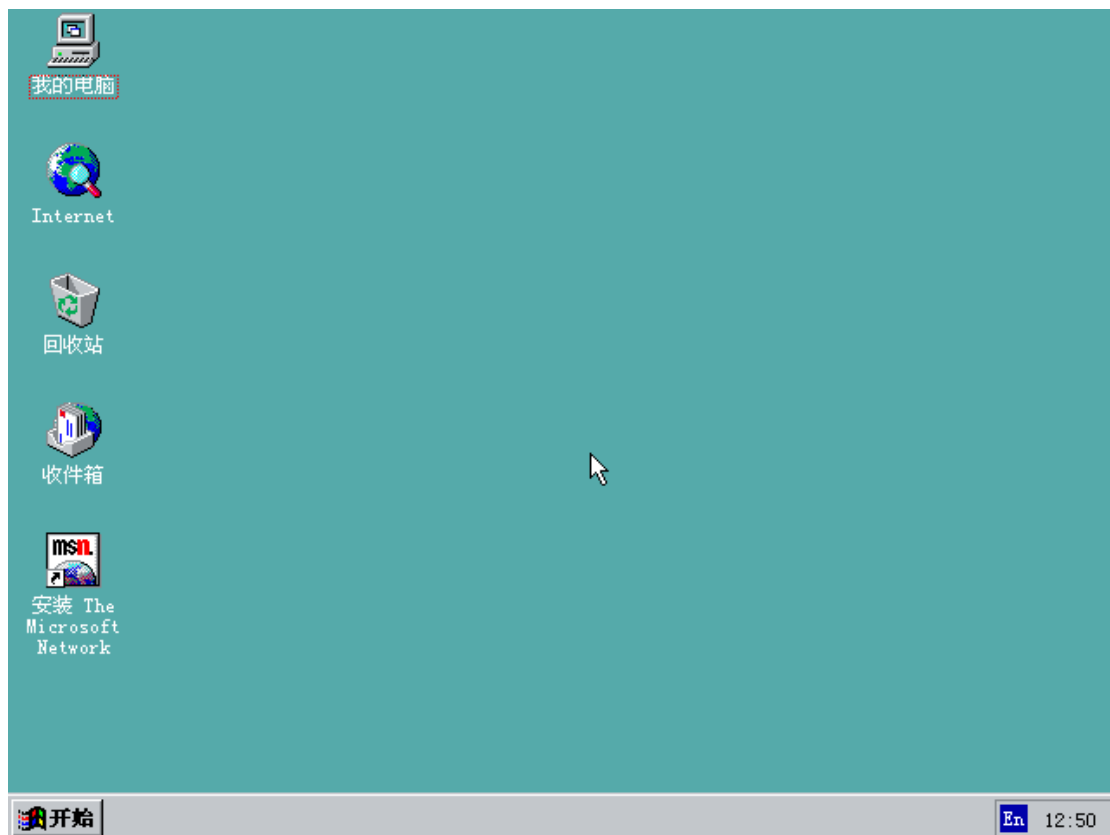
单击“关闭”，



单击“取消”，

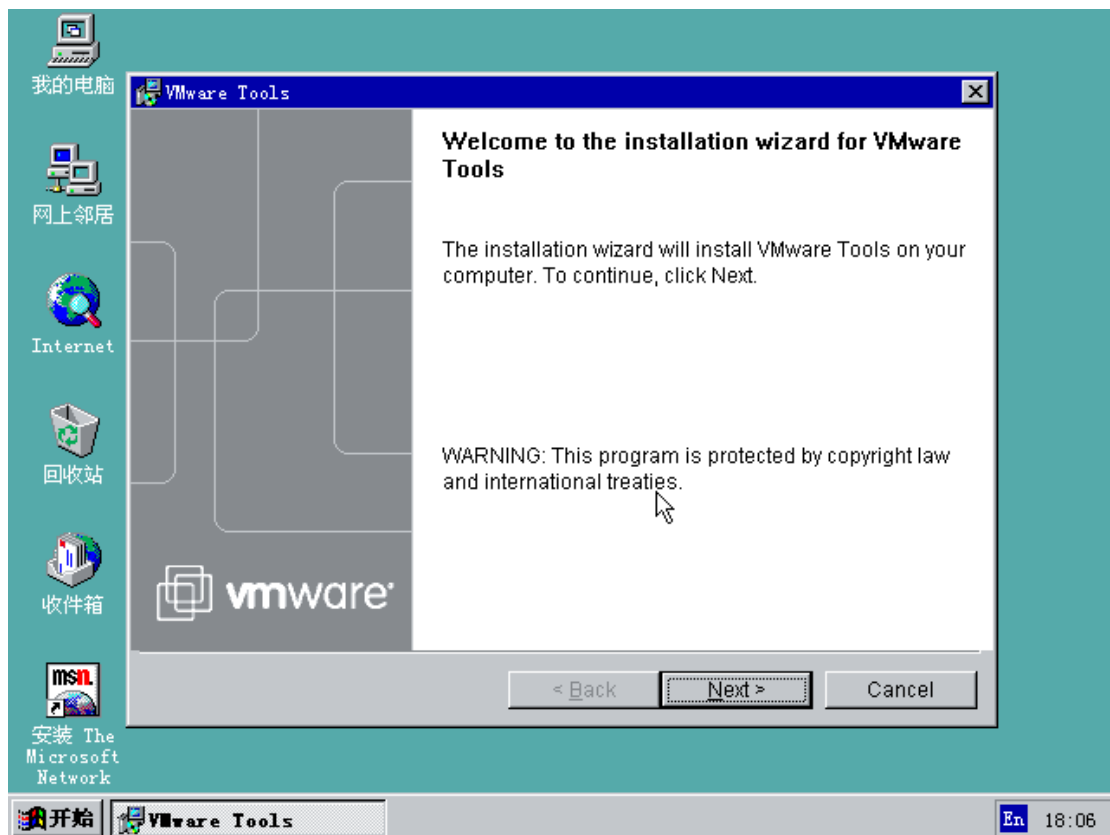
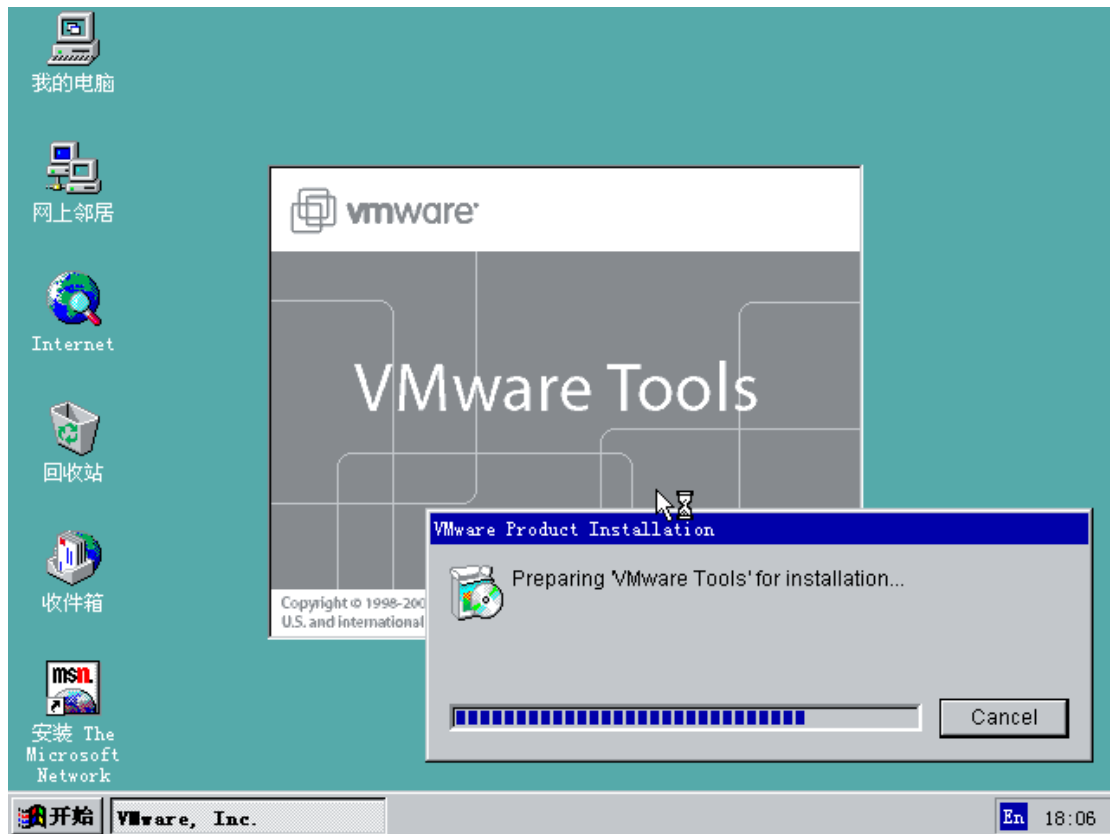


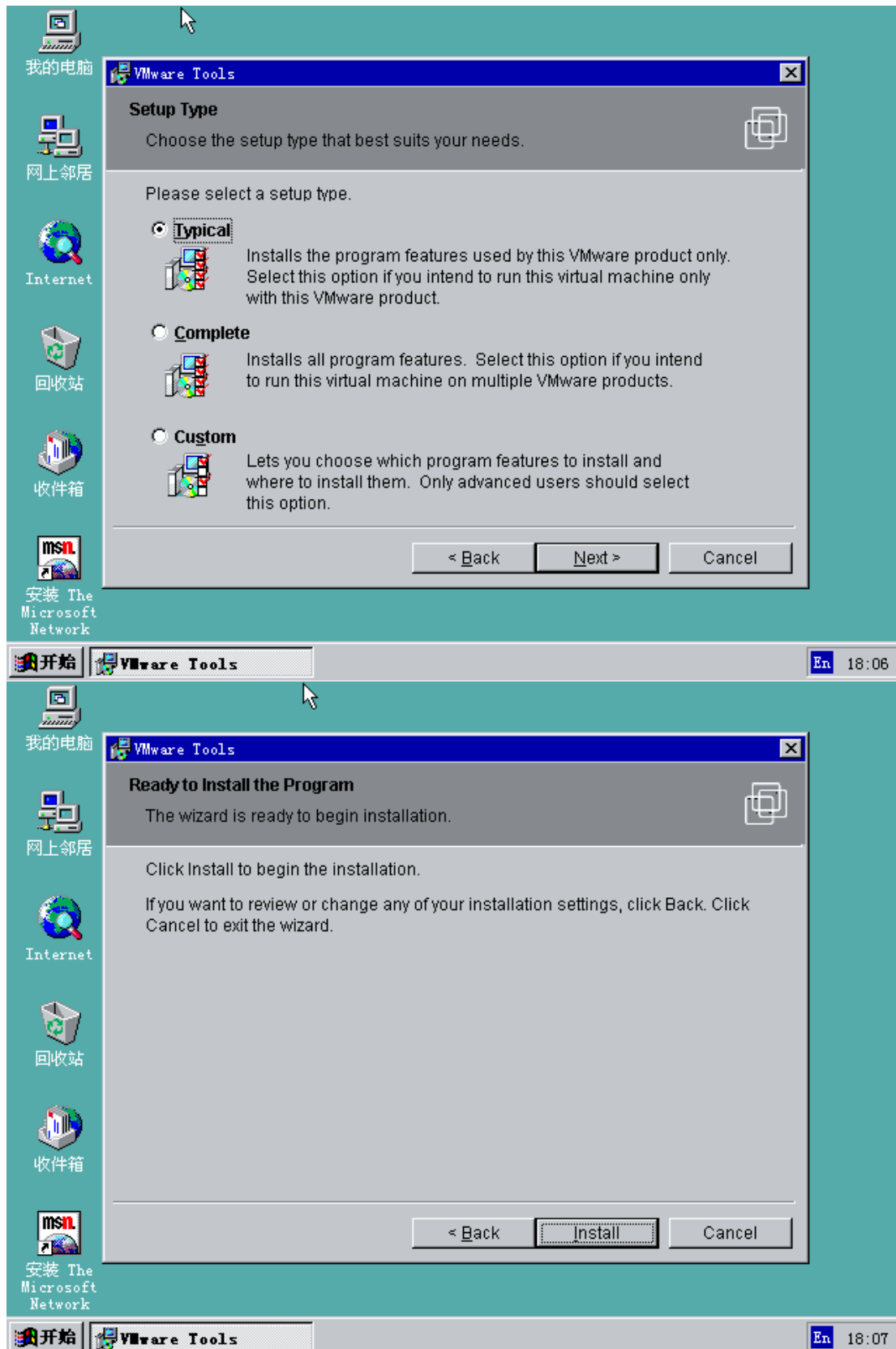
单击“确定”，

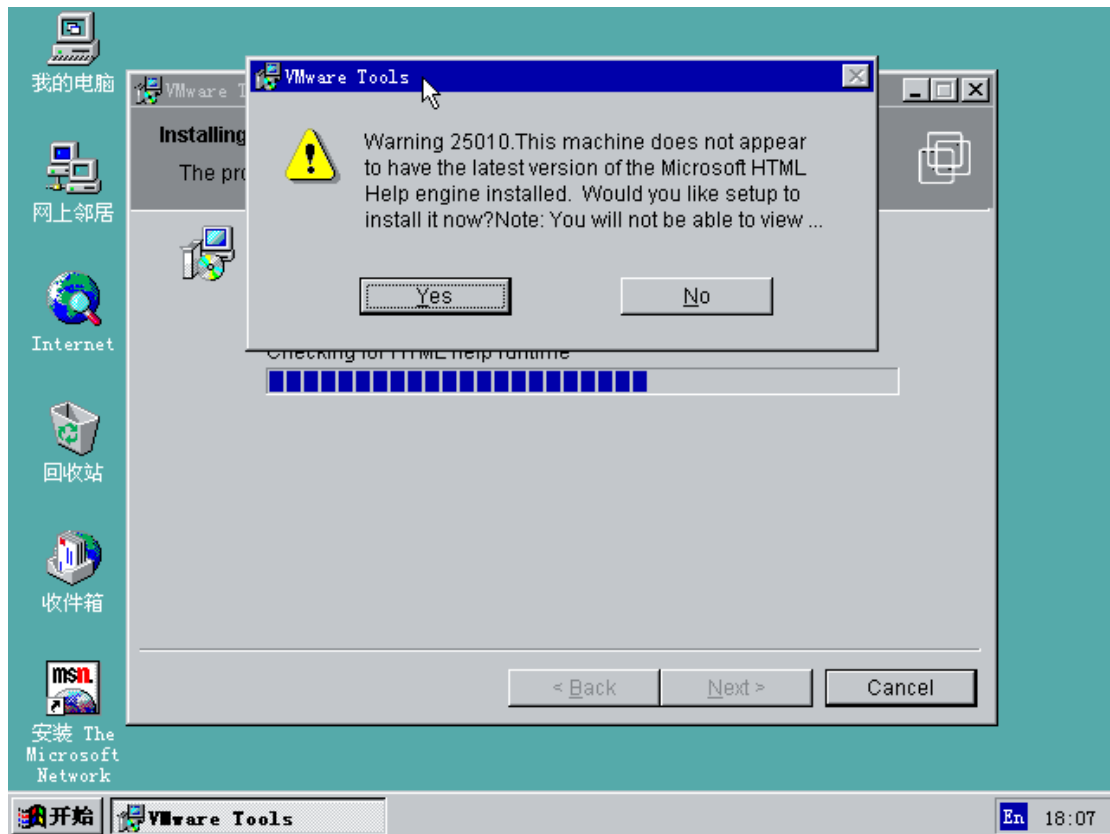


6. 安装显卡驱动

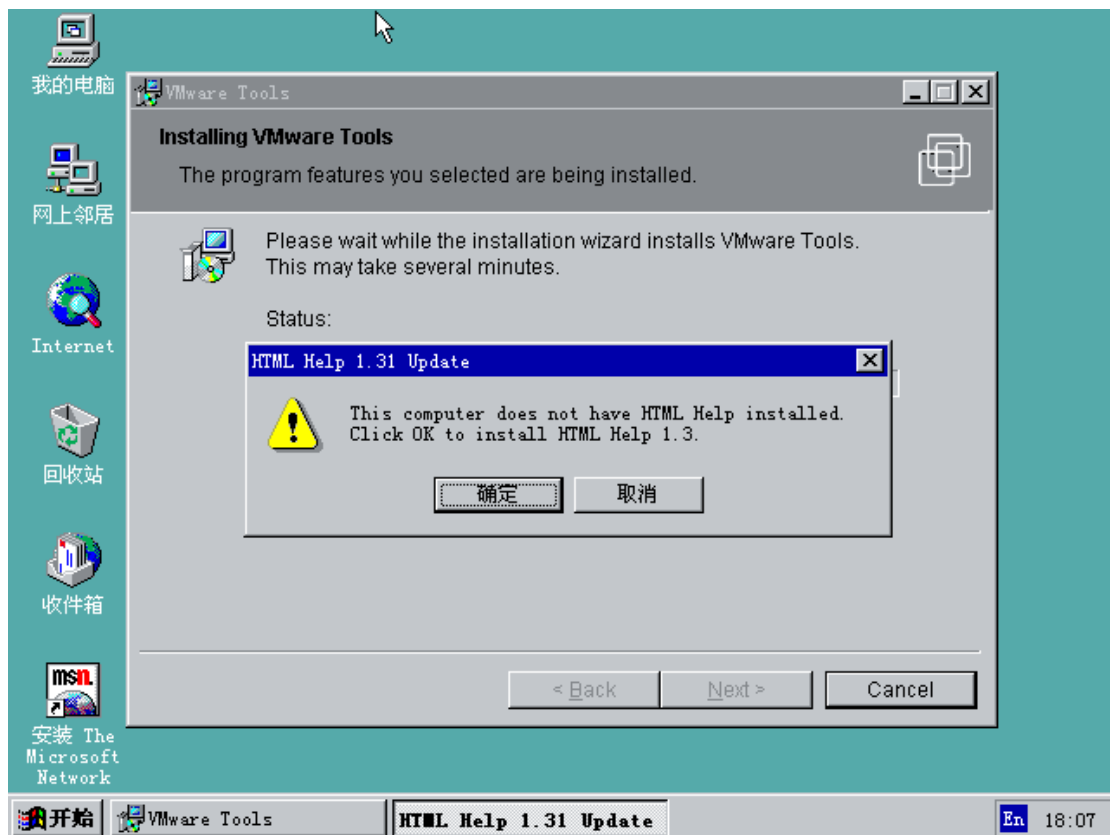
打开 VMware 的菜单，选择 VM- Install VMware Tools...







单击 “Yes” ，

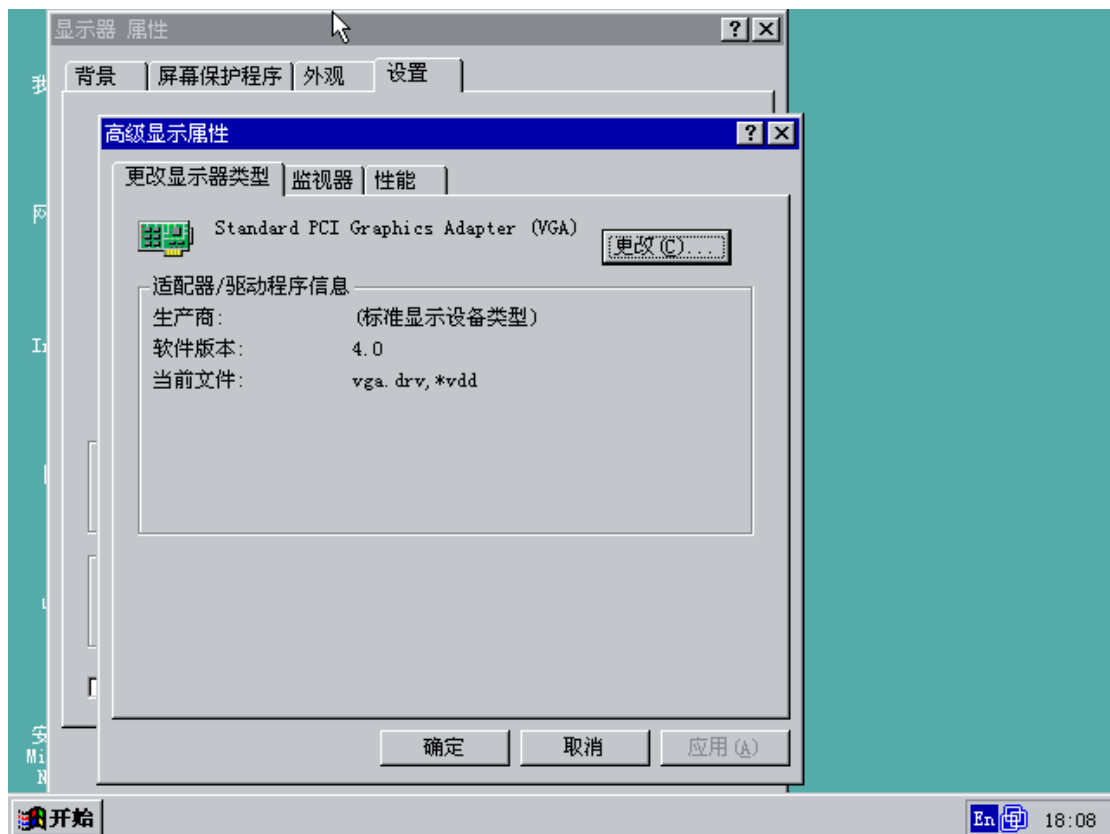




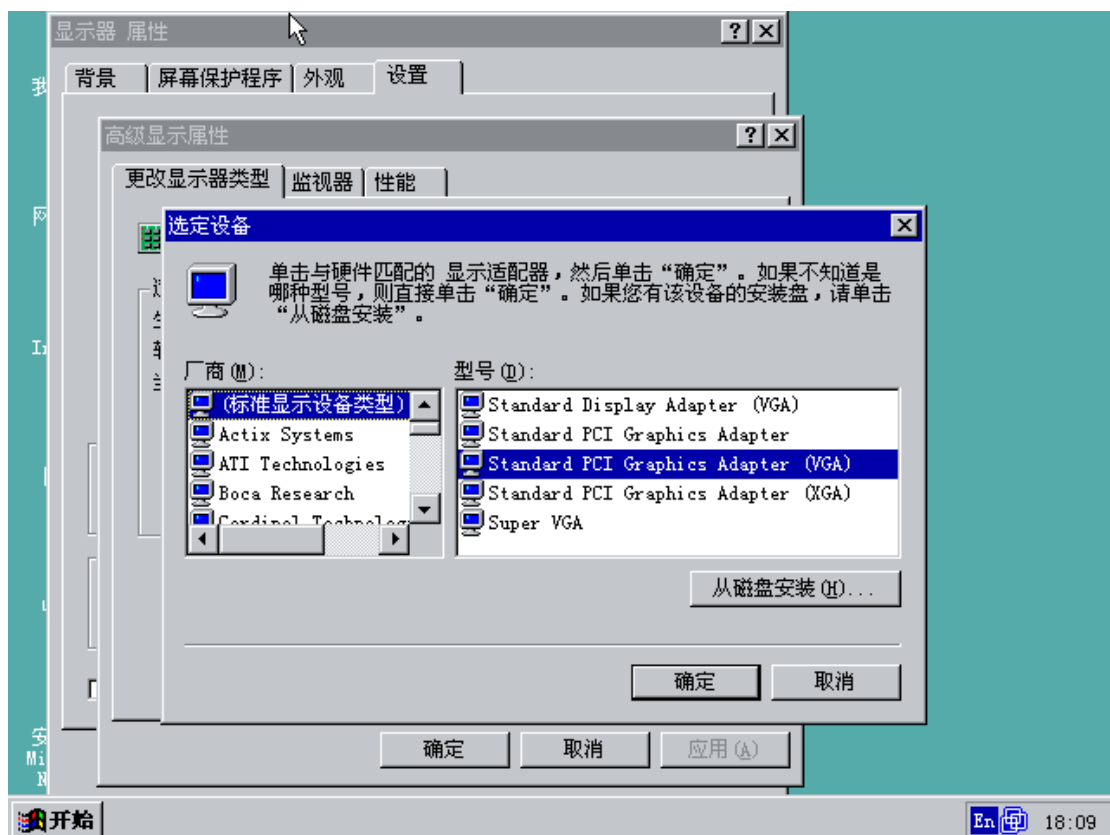
重新启动 Windows 95，



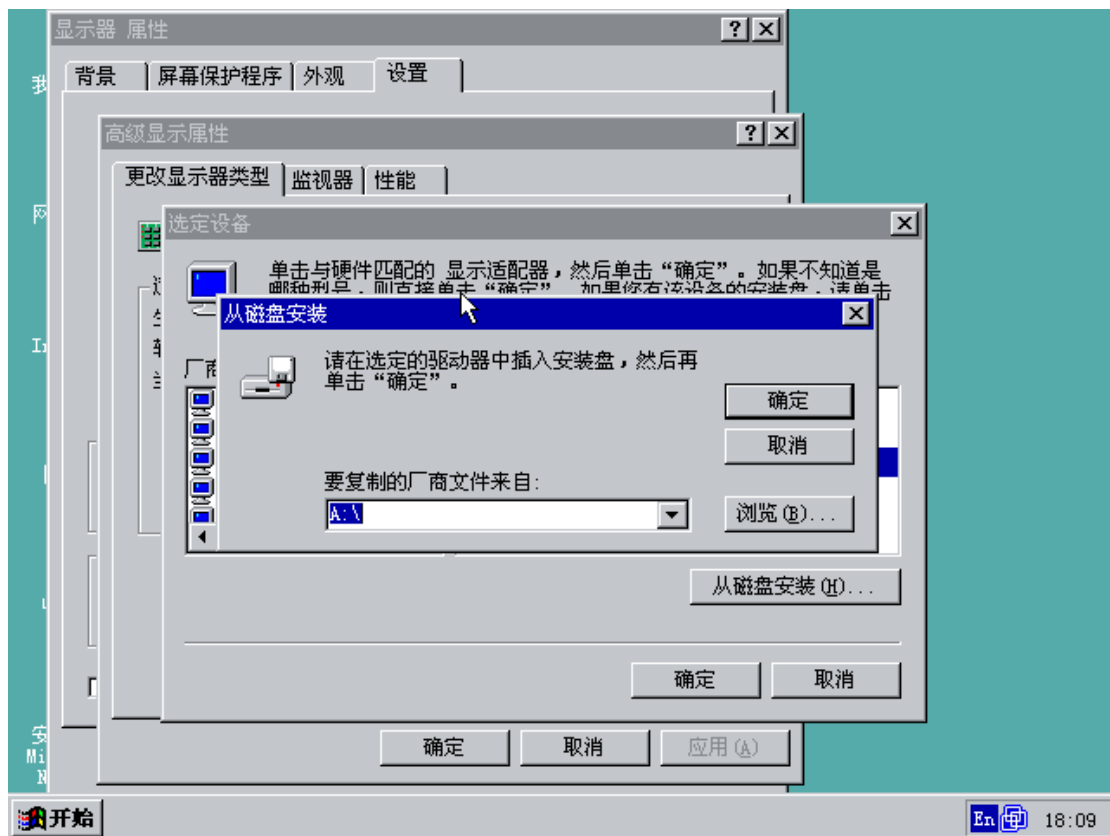
单击“高级属性”，



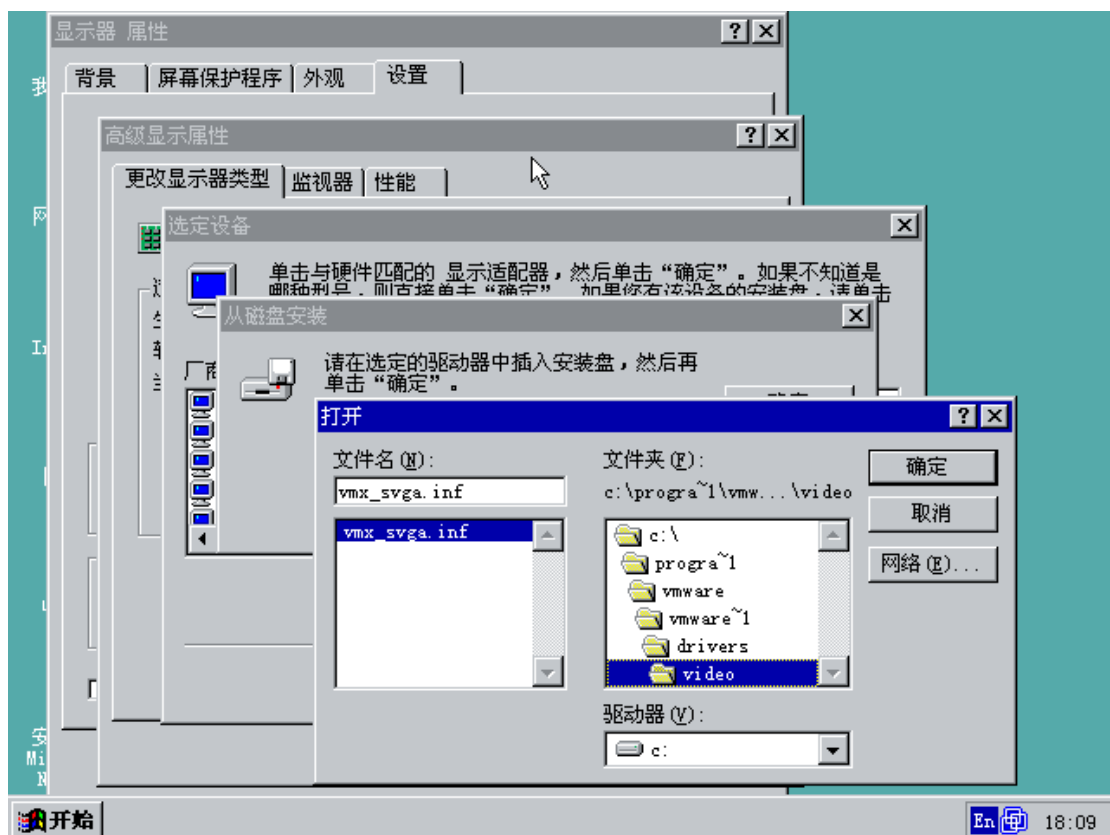
单击“更改”，



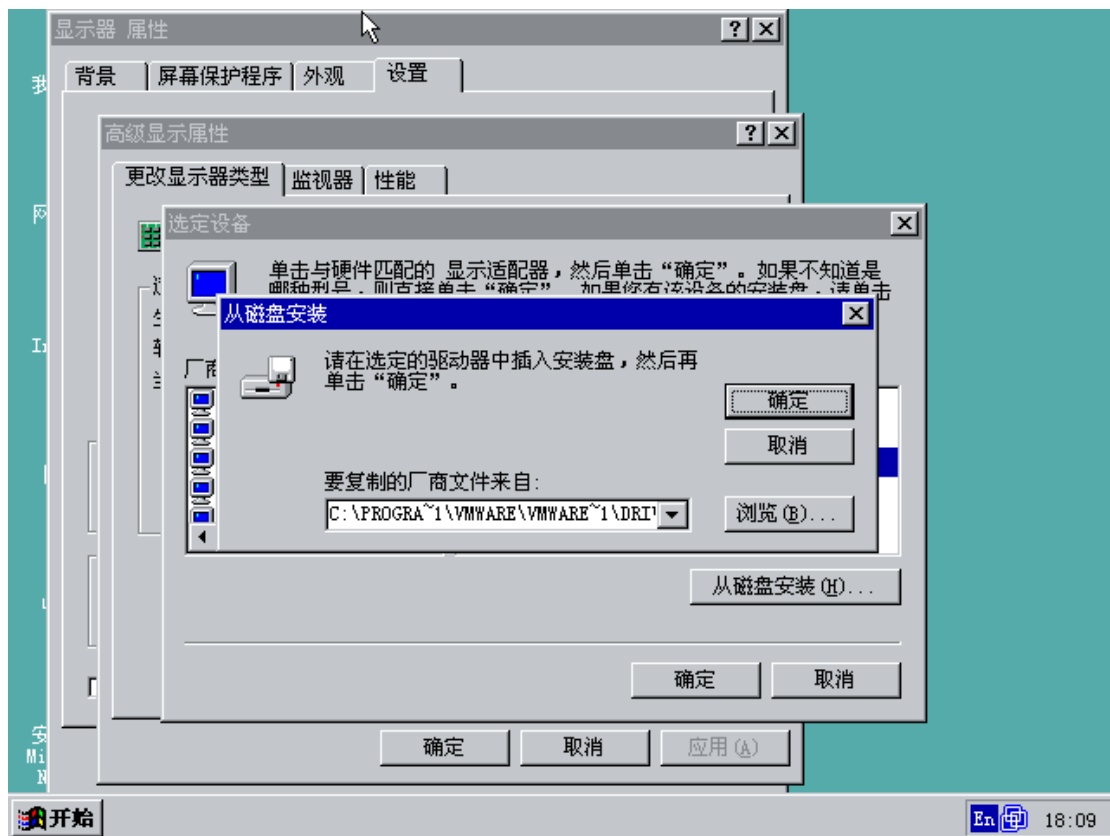
单击“从磁盘安装”，



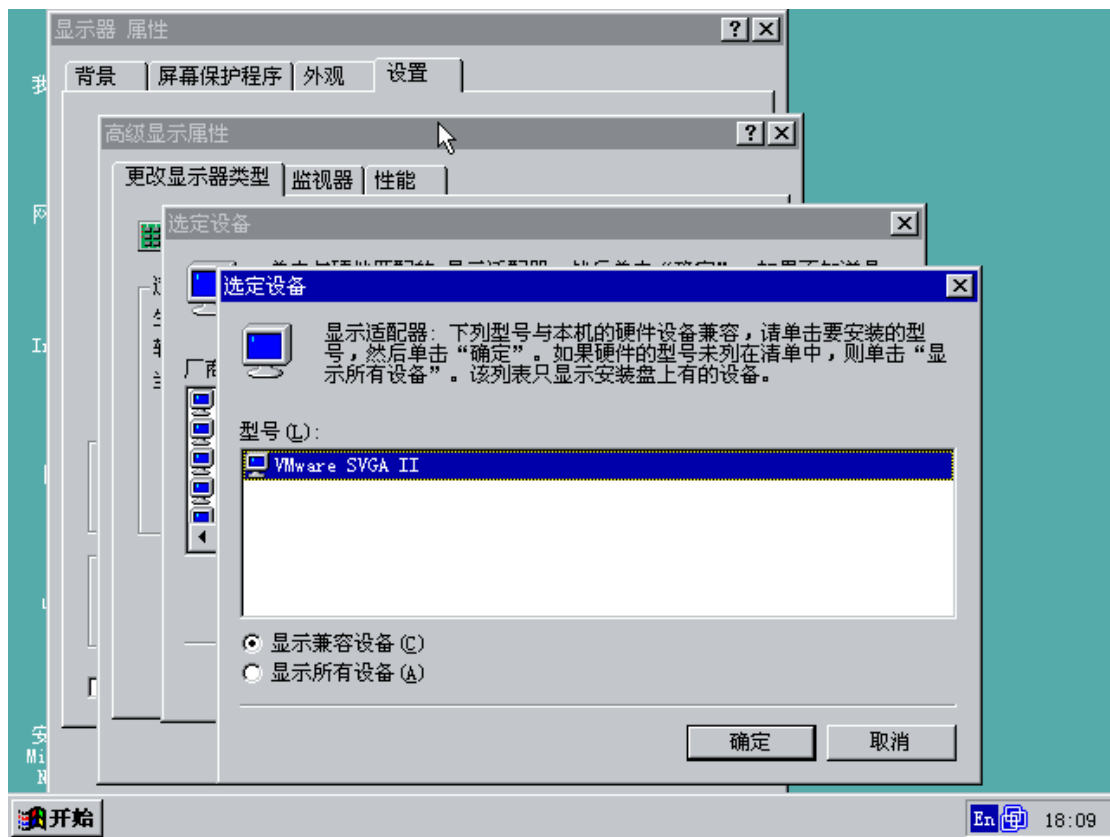
单击“浏览”，



找到 vmx_svga.inf，单击“确定”，



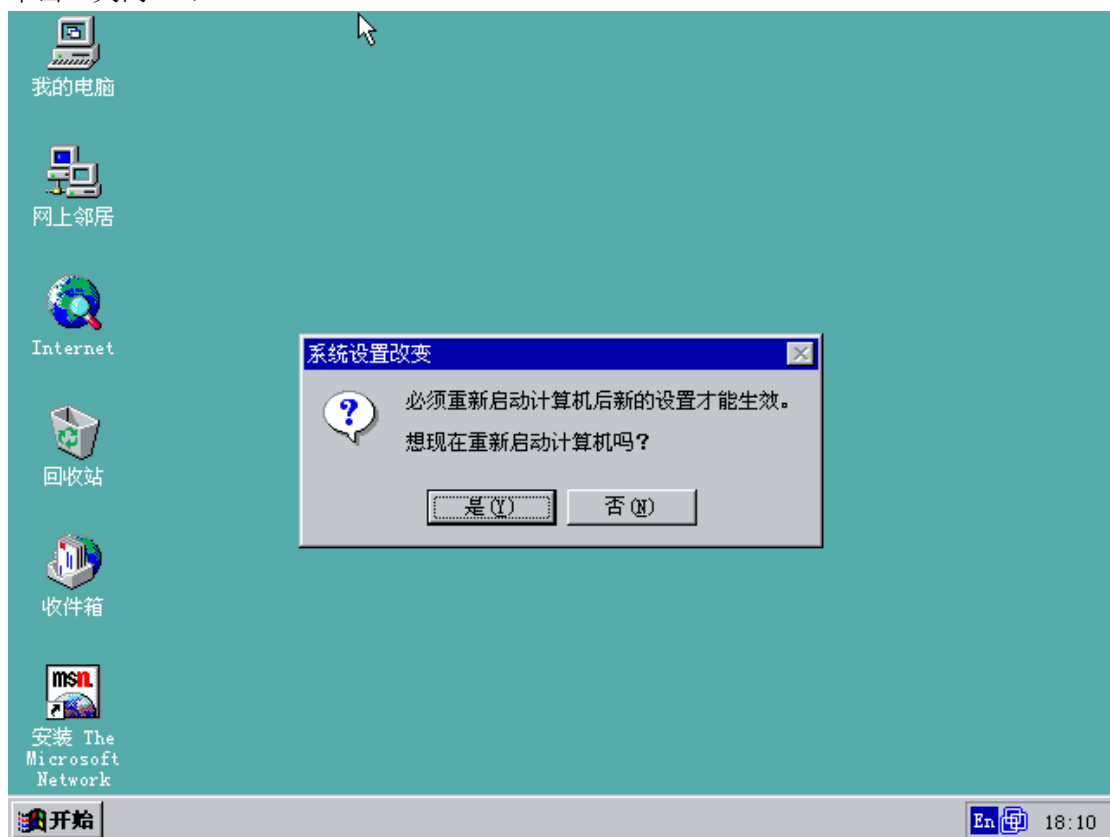
单击“确定”，



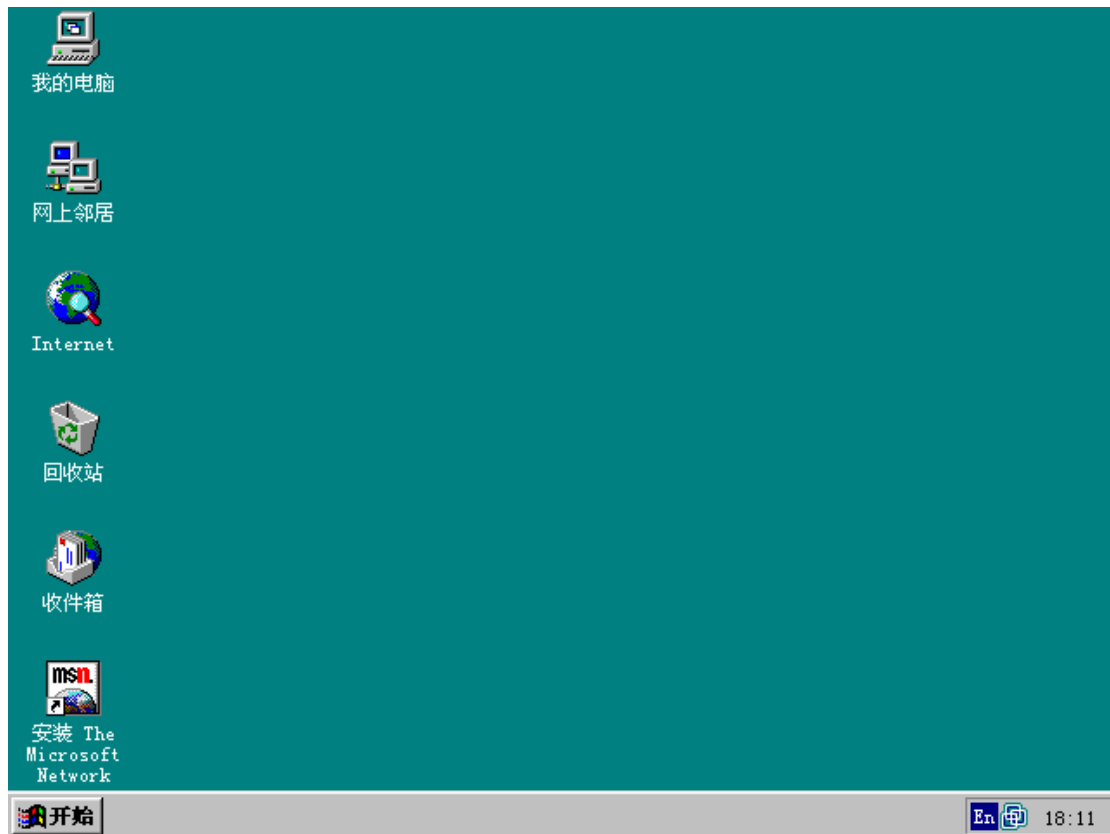
单击“确定”，



单击“关闭”，



单击“是”，



上面介绍的是怎样在 VMware 中安装，也可以把 ISO 文件刻录成光盘，然后用光盘启动安装。